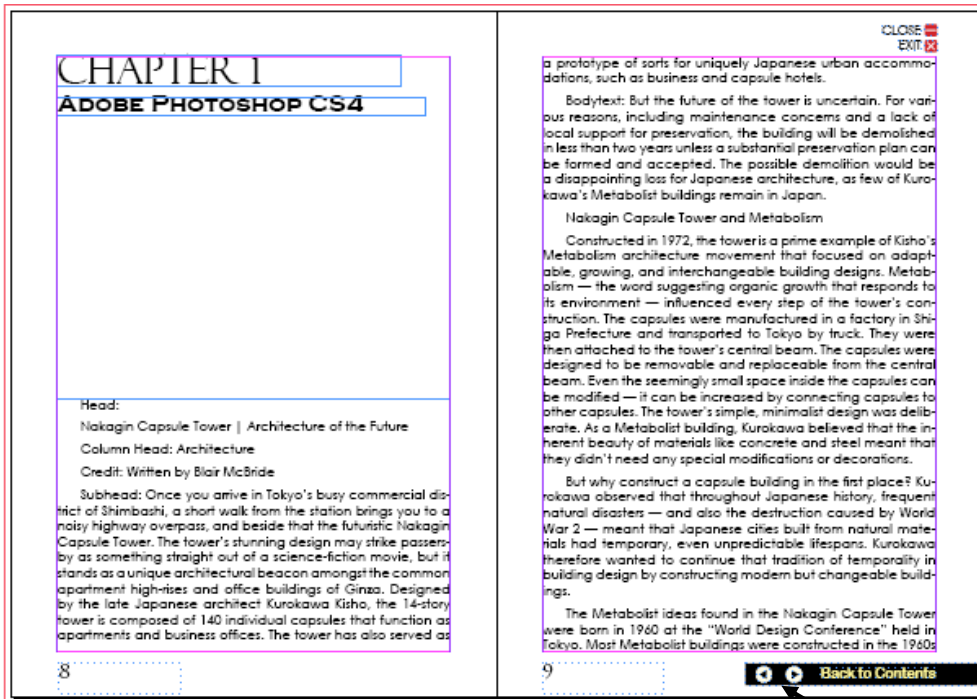


## โปรแกรม Adobe InDesign Cs4

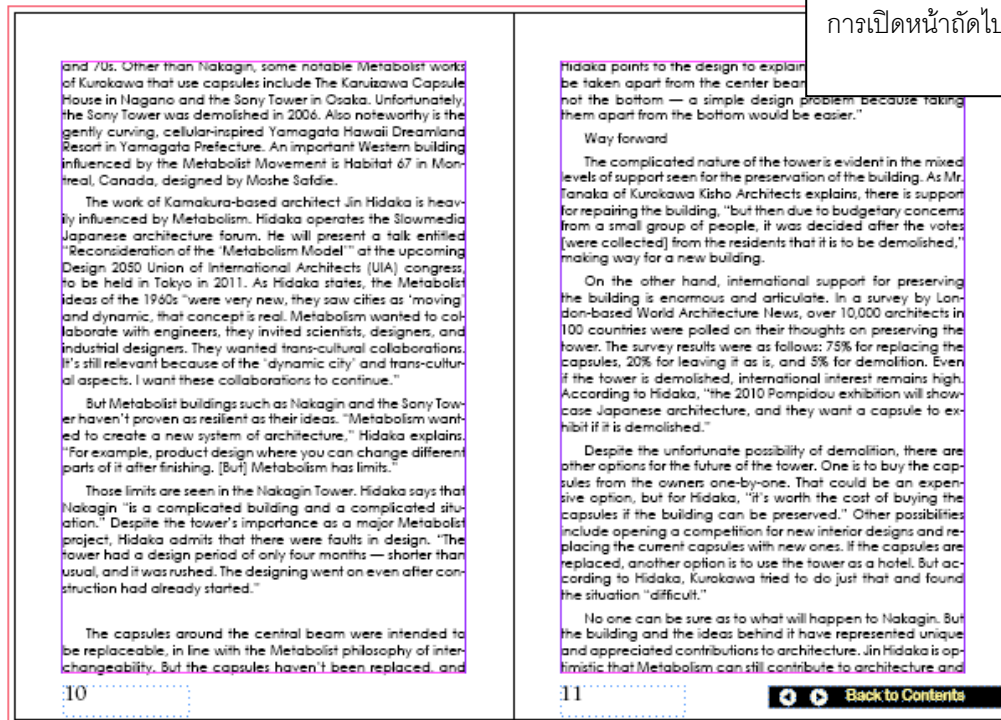
InDesign เป็นโปรแกรมที่ใช้สำหรับการออกแบบและสร้างสรรค์งานที่มีประสิทธิภาพสูง ให้ความถูกต้องแม่นยำ สามารถควบคุมคุณภาพของงานได้ และยังมี การผสมผสาน กับซอฟต์แวร์กราฟฟิก ระดับมืออาชีพอื่นๆ ของ Adobe ได้อย่างลงตัว สามารถสร้างสรรค์ผลงานคุณภาพในระดับมืออาชีพ ผลงานพิมพ์ภาพสีจำนวนมากๆ ได้อย่างสวยงามครบถ้วนสมบูรณ์ทุกชนิด หรือจะเลือกพิมพ์งานด้วยการใช้ เครื่องพิมพ์ต่างๆ ไป เครื่องพิมพ์ที่มีความละเอียดสูงๆ หรือทำเป็นไฟล์งานในรูปแบบของไฟล์ PDF แล้ว เอ็กซ์พอร์ตไปใช้กับ Adobe GoLive หรือ XML ก็ได้ Indesign CS4 สามารถอิมพอร์ตไฟล์ที่ใช้งานส่วนใหญ่ อย่างเช่น ไฟล์นามสกุล .xls .doc และ .txt ได้อย่างสบาย รวดเร็วมากขึ้น และมีตัวเลือกให้เก็บหรือลบ รูปแบบตัวอักษรที่มาพร้อมกับการอิมพอร์ต ในเวอร์ชันนี้ยังมีการปรับปรุงเพิ่มเติมอีก เช่น สามารถเพิ่มบูล เล็ต และหมายเลขหน้าตัวอักษรอย่างอัตโนมัติ เพิ่มความสามารถในการเชื่อมตัวหนังสือ และนอกจากนี้ Indesign CS4 ยังสามารถทำงานร่วมกับออบเจ็คต์ที่เป็นส่วนประกอบย่อยๆ ของเฟรมตัวอักษรได้อีกด้วย ปรับปรุงด้านการจัดการภาพกราฟฟิก Indesign CS4 ได้ปรับปรุง การจัดการกับภาพ กราฟฟิกและเพิ่มความสามารถในการรองรับภาพกราฟฟิก



ตัวอย่างการใช้ Indesign ออกแบบงานด้านสิ่งพิมพ์ในรูปแบบต่าง ๆ และสามารถ save งานเป็นไฟล์นามสกุล pdf และสามารถสร้างปุ่ม เพื่อควบคุมงานได้



ปุ่มใช้สำหรับควบคุมเอกสารไฟล์ pdf ในการเปิดหน้าถัดไปหรือย้อนกลับ



- ตัวอย่างการออกแบบงานสิ่งพิมพ์โดยใช้ Indesign



namia city' and trans-cultural aspects. I want these collaborations to continue."

But Metabolist buildings such as Nakagin and the Sony Tower haven't proven as resilient as their ideas. "Metabolism wanted to create a new system of architecture," Hidaaka explains. "For example, product design where you can change different parts of it after finishing. [But] Metabolism has limits."

Those limits are seen in the Nakagin Tower. Hidaaka says that Nakagin "is a complicated building and a complicated situation." Despite the tower's importance as a major Metabolist project, Hidaaka admits that there were faults in design. "The tower had a design period of only four months—shorter than usual,

and it was rushed. The designing went on even after construction had already started."

The capsules around the central beam were intended to be replaceable, in line with the Metabolist philosophy of interchangeability. But the capsules haven't been replaced, and Hidaaka points to the design to explain why. "The capsules can be taken apart from the center beam, but only from the top, not the bottom—a simple design problem because taking them apart from the bottom would be easier."

#### Way forward

The complicated nature of the tower is evident in the mixed levels of support seen for the preservation of the

building. As Mr. Tanaka of Kurokawa Kisho Architects explains, there is support for repairing the building, "but then due to budgetary concerns from a small group of people, it was decided after the votes [were collected] from the residents that it is to be demolished," making way for a new building.

On the other hand, international support for preserving the building is enormous and articulate. In a survey by London-based World Architecture News, over 10,000 architects in 100 countries were polled on their thoughts on preserving the tower. The survey results were as follows: 75% for replacing the capsules, 20% for leaving it as is, and 5% for demolition. Even if the tower is demolished, international interest remains high. According to Hidaaka, "The 2010 Pompidou exhibition will showcase Japanese architecture, and they want a capsule to exhibit if it is demolished."

Despite the unfortunate possibility of demolition, there are other options for the future of the tower. One is to buy the capsules from the owners one-by-one. That could be an expensive option, but for Hidaaka, "it's worth the cost of buying the capsules if the building can be preserved." Other possibilities include creating a competing set for new interior designs and replacing the current capsules with new ones. If the capsules are replaced, another option is to use the tower as a hotel. But according to Hidaaka, Kurokawa tried to do just that and found the situation "affairt."

No one can be sure as to what will happen to Nakagin. But the building and the ideas behind it have represented unique and appreciated contributions to architecture. Jin Hidaaka is optimistic that Metabolism can still contribute to architecture and culture. Metabolism can't



The Nakagin Capsule Tower certainly faces a troubled future, so if you'd like to check it out for yourself, do it as soon as possible.



Explorer. In addition, the code you see in the debugger appears as it is rendered, and not as it appears in the source file. You can also edit HTML and CSS live so you see the results immediately. To open Internet Explorer Developer Tools, click the Tools button, and then click Developer Tools. It can be frustrating when a program changes your default search provider, especially if the provider is changed without your permission. But it's also preventable. Whenever a program tries to request a change to your default search provider, Internet Explorer displays a dialog box that lets you make the decision whether to keep or change your current default provider. If you want Internet Explorer to always block changes to your default search provider, you can select the Prevent programs from suggesting changes to my default search provider check box in the dialog box that appears when a program attempts a change. Websites that were designed for earlier versions of Internet Explorer might not display correctly in the current version. However, you can often improve how a website will

look in Internet Explorer by using a new feature called Compatibility View. When you turn on Compatibility View, the webpage you're viewing—as well as any other webpages within the website's domain—will be displayed as if you were using an earlier version of Internet Explorer. Finding the information you want on the web often requires more than just searching for a webpage. Once you're viewing a webpage, you often need to find the information or reference that is buried somewhere within the page. Now you can search more effectively within webpages by using Internet Explorer 8. Earlier versions of Internet Explorer had the ability to find words or phrases in a webpage. Internet Explorer 8 features several improvements that enable you to do all that and more: fraudulent and phishing websites, and from other threats as well. For more information, see [How does SmartScreen Filter help protect my computer from malicious or phishing websites?](#) Internet Explorer 8 Developer Tools help you to research and resolve problems involving HTML, Cascading Style Sheets (CSS), and JavaScript. The De-

veloper Tools include The Favorites bar is the new name for the Links toolbar that was in previous versions of Internet Explorer. Just as before, you can drag web addresses from the Address bar to the Favorites bar, but now you can also drag links from webpages you are viewing. In addition, you can use the Favorites bar to monitor RSS feeds you've subscribed to, and to store your collection of Web Slices. Web Slices are specific bits of web content—such as the temperature outside, or the price on an auction item you're watching—that you can add to the Favorites bar. The appearance of the Web Slice on the Favorites bar changes to notify you of changes to the web content, so you can stay up to date with the most current information. Phishing Filter has been replaced in Internet Explorer 8 by a new feature called SmartScreen Filter. Using SmartScreen Filter can help protect your computer from fraudulent and phishing websites, and from other threats as well. For more information, see [How does SmartScreen Filter help protect my computer from malicious or phishing websites?](#) Internet Explorer 8 Developer Tools help

you to research and resolve problems involving HTML, Cascading Style Sheets (CSS), and JavaScript. The Developer Tools include a built-in debugger that enables website programmers to set breakpoints and step through client-side script without leaving Internet Explorer. In addition, the code you see in the debugger appears as it is rendered, and not as it appears in the source file. You can also edit HTML and CSS live so you see the results immediately. To open Internet Explorer Developer Tools, click the Tools button, and then click Developer Tools. It can be frustrating when a program changes your default search provider, especially if the provider is changed without your permission. But it's also preventable. Whenever a program such as an add-on or toolbar tries to request a change to your default search provider,

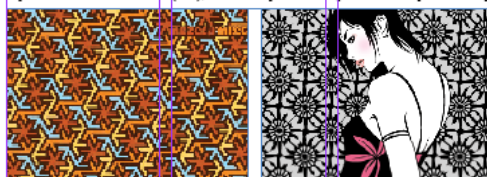
Internet Explorer displays a dialog box that lets you make the decision whether to keep or change your current default provider. If you want Internet Explorer to always block changes to your default search provider, you can select the Prevent programs from suggesting changes to my default search provider check box in the dialog box that appears when a program attempts a change. Websites that were designed for earlier versions of Internet Explorer might not display correctly in the current version. However, you can often improve how a

called Compatibility View. When you turn on Compatibility View, the webpage you're viewing—as well as any other webpages within the website's domain—will be displayed as if you were using an earlier version of Internet Explorer. Finding the information you want on the web often requires more than just searching for a webpage. Once you're viewing a webpage, you often need to find the information or reference that is buried somewhere within the page. Now you can search



more effectively within webpages by using Internet Explorer 8. Earlier versions of Internet Explorer had the ability to find words or phrases in a webpage. Internet Explorer 8 features several improvements that enable you to do all that and more: fraudulent and phishing websites, and from other threats as well. For more information, see [How does SmartScreen Filter help protect my computer from malicious or phishing websites?](#) Internet Explorer 8 Developer Tools help you to research and resolve problems involving HTML, Cascading Style Sheets (CSS), and JavaScript. The Developer Tools include a built-in debugger that enables website programmers to set breakpoints and step through client-side script without leaving Internet Explorer. In addition, the code you see in the debugger appears as it is rendered, and not as it appears in the source file. You can also edit HTML and CSS live so you see the results immediately. To open Internet Explorer Developer

webpages you are viewing. In addition, you can use the Favorites bar to monitor RSS feeds you've subscribed to, and to store your collection of Web Slices. Web Slices are specific bits of web content—such as the temperature outside, or the price on an auction item you're watching—that you can add to the Favorites bar. The appearance of the Web Slice on the Favorites bar changes to notify you of changes to the web content, so you can stay up to date with the most current information. Phishing Filter has been replaced in Internet Explorer 8 by a new feature called SmartScreen Filter. Using SmartScreen Filter can help protect your computer from fraudulent and phishing websites, and from other threats as well. For more information, see [How does SmartScreen Filter help protect my computer from malicious or phishing websites?](#) Internet Explorer 8 Developer Tools help you to research and resolve problems involving HTML, Cascading Style Sheets (CSS), and JavaScript. The Developer Tools include a built-in debugger that enables website programmers to set breakpoints and step through client-side script without leaving Internet Explorer. In addition, the code you see in the debugger appears as it is rendered, and not as it appears in the source file. You can also edit HTML and CSS live so you see the results immediately. To open Internet Explorer Developer

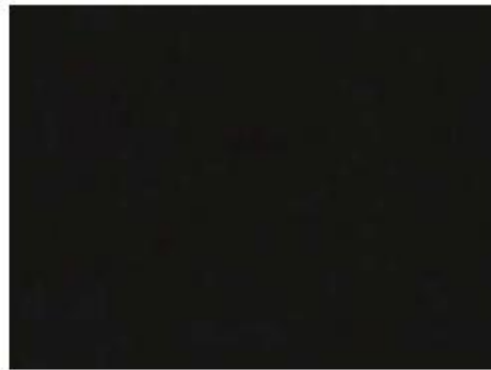


- ตัวอย่างการใช้ Indesign สร้างงานด้านกราฟฟิกซึ่งต้อง save เป็นไฟล์ pdf



เมื่อนำเมาส์มาคลิกจะทำให้รูปภาพมีการ  
เน้นใหญ่ขึ้นเพิ่มความชัดเจนยิ่งขึ้น

- ตัวอย่างการสร้างงานด้านกราฟิกโดยมีการเพิ่มไฟล์ video ปุ่มควบคุม โดย save ไฟล์เป็นนามสกุล pdf



ซึ่งคุณสมบัติต่าง ๆ ของ Indesign cs4 นั้นสามารถนำมาออกแบบงานในการทำ e-learning และสามารถเพิ่มลูกเล่นต่าง ๆ ให้กับเอกสารไฟล์ pdf ได้ และง่ายต่อการออกแบบแผ่นพับ หรือวารสาร สิ่งพิมพ์ต่าง ๆ ได้

